

# Android enterprise

Work-Managed enrolment  
NFC provisioning



AirWatch



Android 7.x

September 2017



# Requirements

---

In order to proceed, you must have:

- Android 6.0 or later installed on the devices to be provisioned. Earlier Android versions are less likely to reliably work. Android 7.0+ recommended.
- A spare device with NFC to “bump” the devices to be provisioned.
- NFC functionality enabled out of the box for devices to be provisioned.
- A functional AirWatch EMM solution in place.
- Android enterprise fully configured on your EMM platform.

NFC provisioning is the earliest form of Android enterprise Work-Managed enrolment and cannot be done remotely. Consider as an alternative QR enrolment or DPC identifier enrolment; these do allow enrolment remotely.





# Configure the relay

---

The Relay app must be installed on a spare device that is not going to be enrolled onto the EMM platform.

Once downloaded from Google Play, open the Relay app, then tap **SETUP** under **Provision devices in a single bump (Android 6.0+)**.

## Provision devices in a single bump (Android 6.0+)

Configure Wi-Fi, provisioning and enrollment settings to stage the device in a single NFC bump.

SETUP

## Provision devices in 2 bumps (Android 5.0+)

Provision the device through 2 bumps. The first bump configures Wi-Fi and provisioning settings. The second bump configures enrollment settings.

SETUP



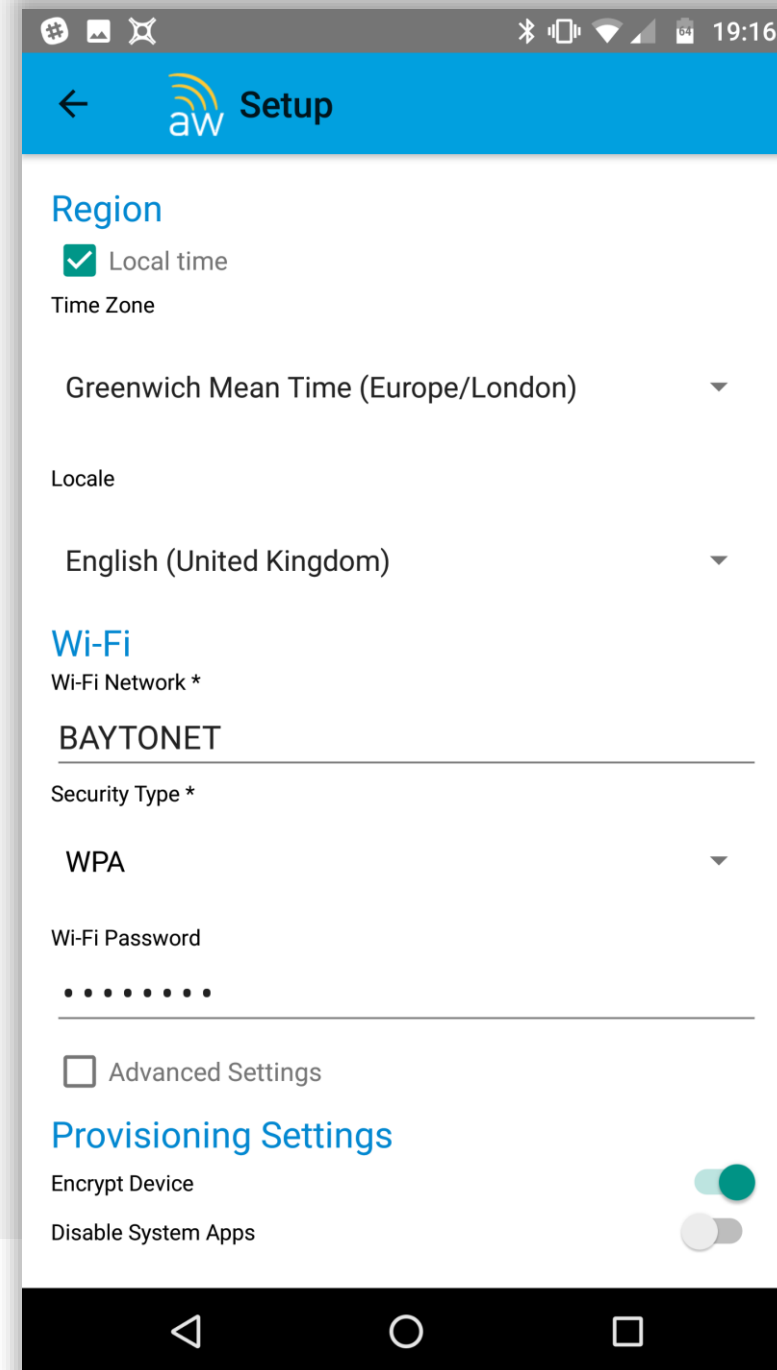
# Configure the relay

You'll now be presented several configuration options:

- Region – Leave checked for local time
- Timezone – Set your respective timezone
- Locale – Set your preferred locale
- WiFi SSID
- WiFi Security Type
- WiFi Password

WiFi fields are mandatory, the time zone and locale are normally automatically set.

Scroll down to continue.





# Configure the relay

Now, under **Provisioning Settings** ensure **Encrypt Device** is enabled, and optionally **Disable System Settings** also if required.

For **Enrollment Settings** input:

- Server URL (beginning with ds, not cn)
- Group ID of the Org group you're enrolling against
- Username
- Password

If left blank, AirWatch will prompt for these details once the device has completed provisioning.

If you have a locally-hosted agent, you may wish to update the Download URL too.

Tap **READY** to continue.

Setup

Advanced Settings

Provisioning Settings

Encrypt Device

Disable System Apps

Enrollment Settings

Server

ds801.awmdm.com

Group ID

androidenterprise

Username

jason

Password

Advanced

Agent Download URL

Use Default URL

READY



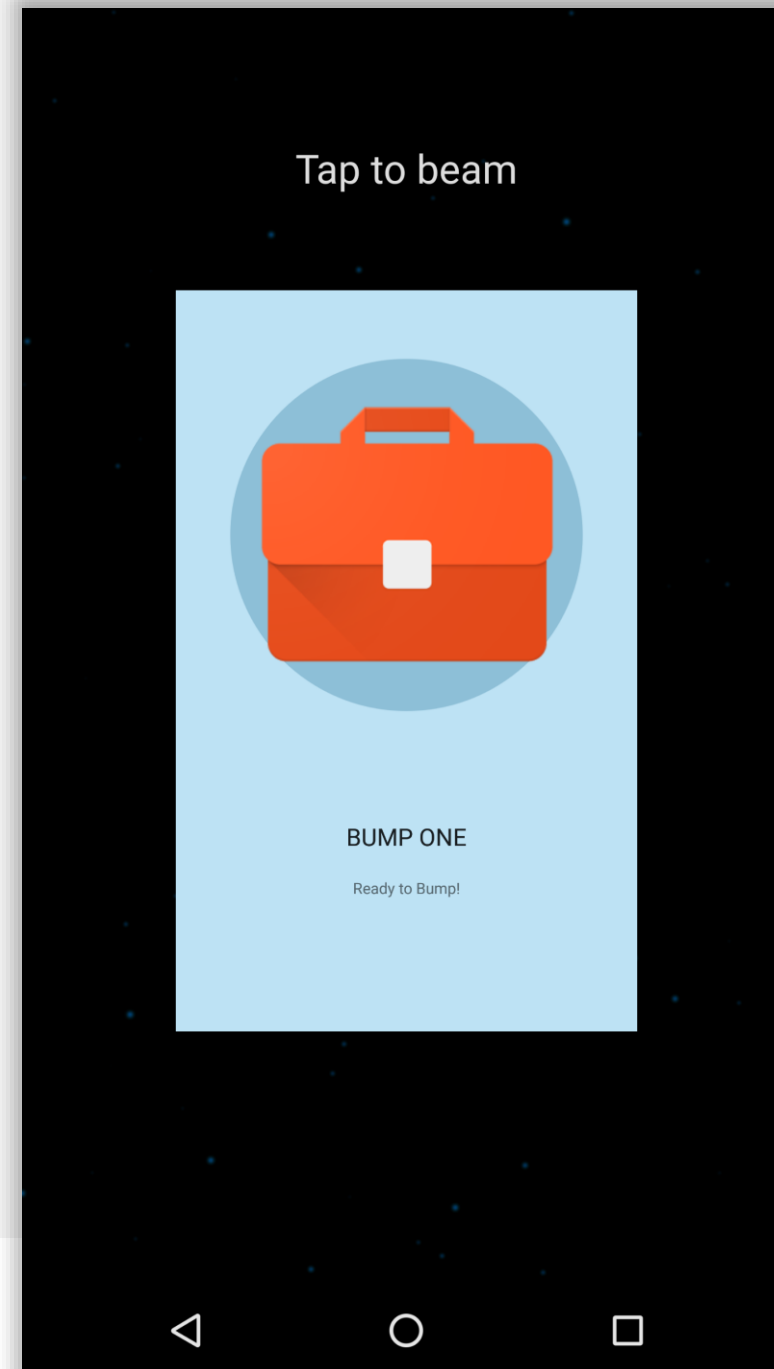
# Bump the devices

---

Locate the NFC radios on both the provisioning device and the device to be provisioned.

Touch the two devices together until a sound is heard and an animation played on the provisioning device. The device to be provisioned should also indicate a successful connection has been made.

Tap the screen on the provisioning device in order to transmit the NFC payload.





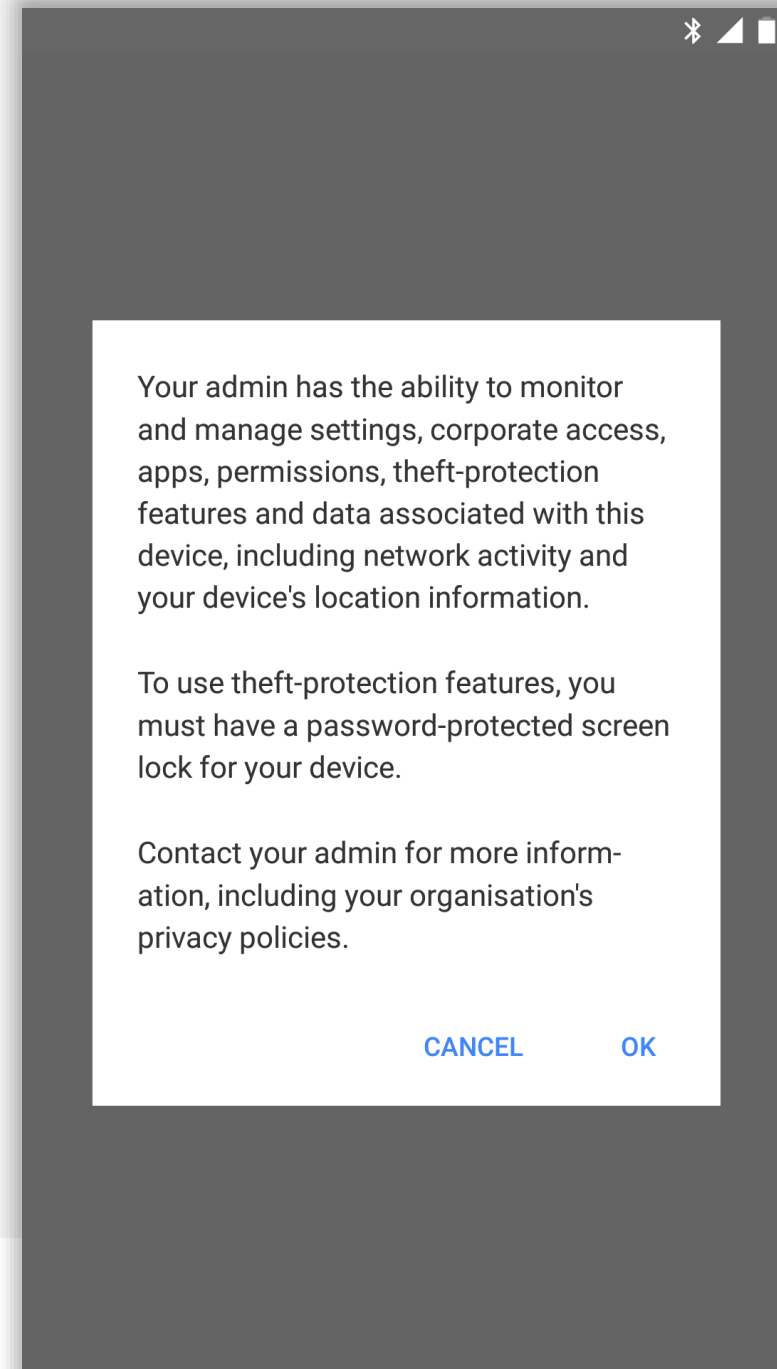
# Begin provisioning

---

Once the NFC payload has been transmitted, the device being provisioned will display a prompt with an overview of monitoring capabilities.

You must accept the device being managed by the organisation in order to begin provisioning.

Tap **OK** to proceed.



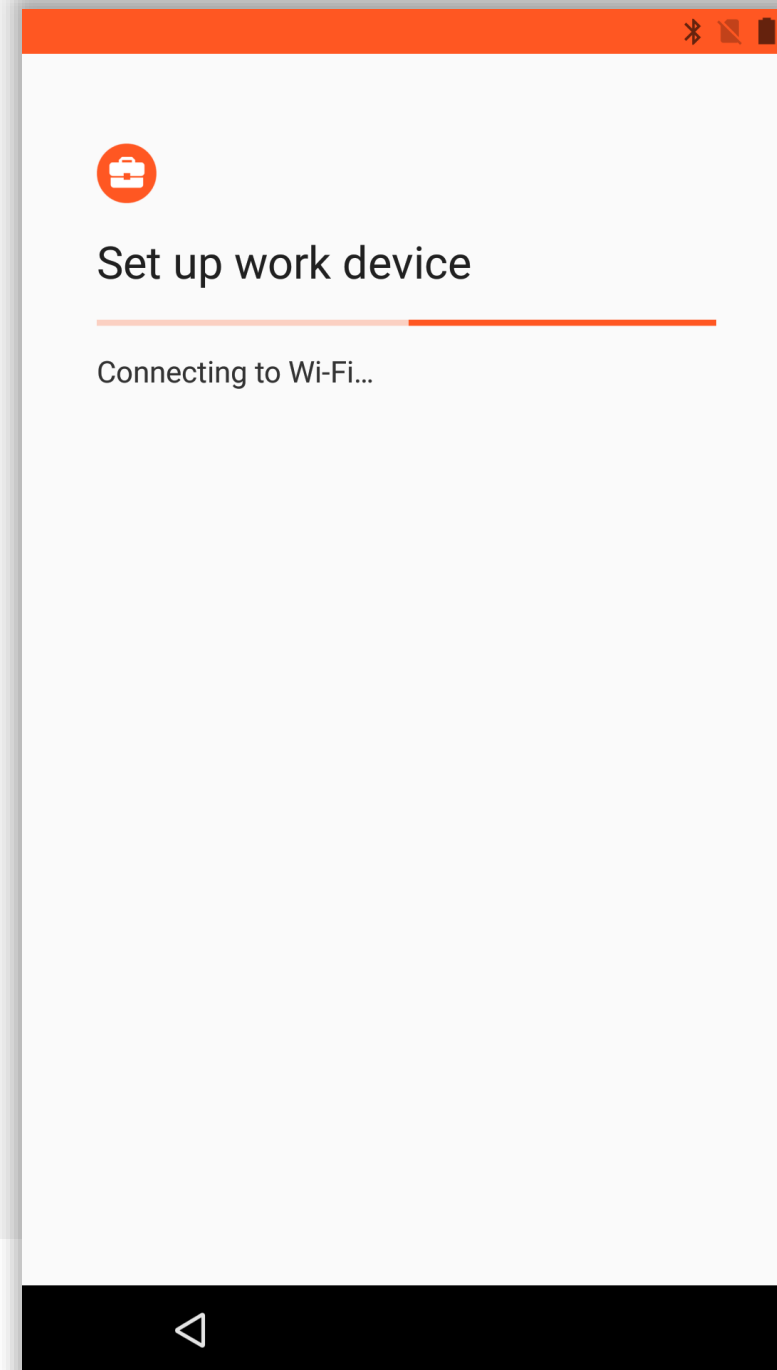


# The device will provision

---

The device will attempt to connect to the WiFi network provided in the NFC payload and begin the provisioning process.

This may take a few minutes.





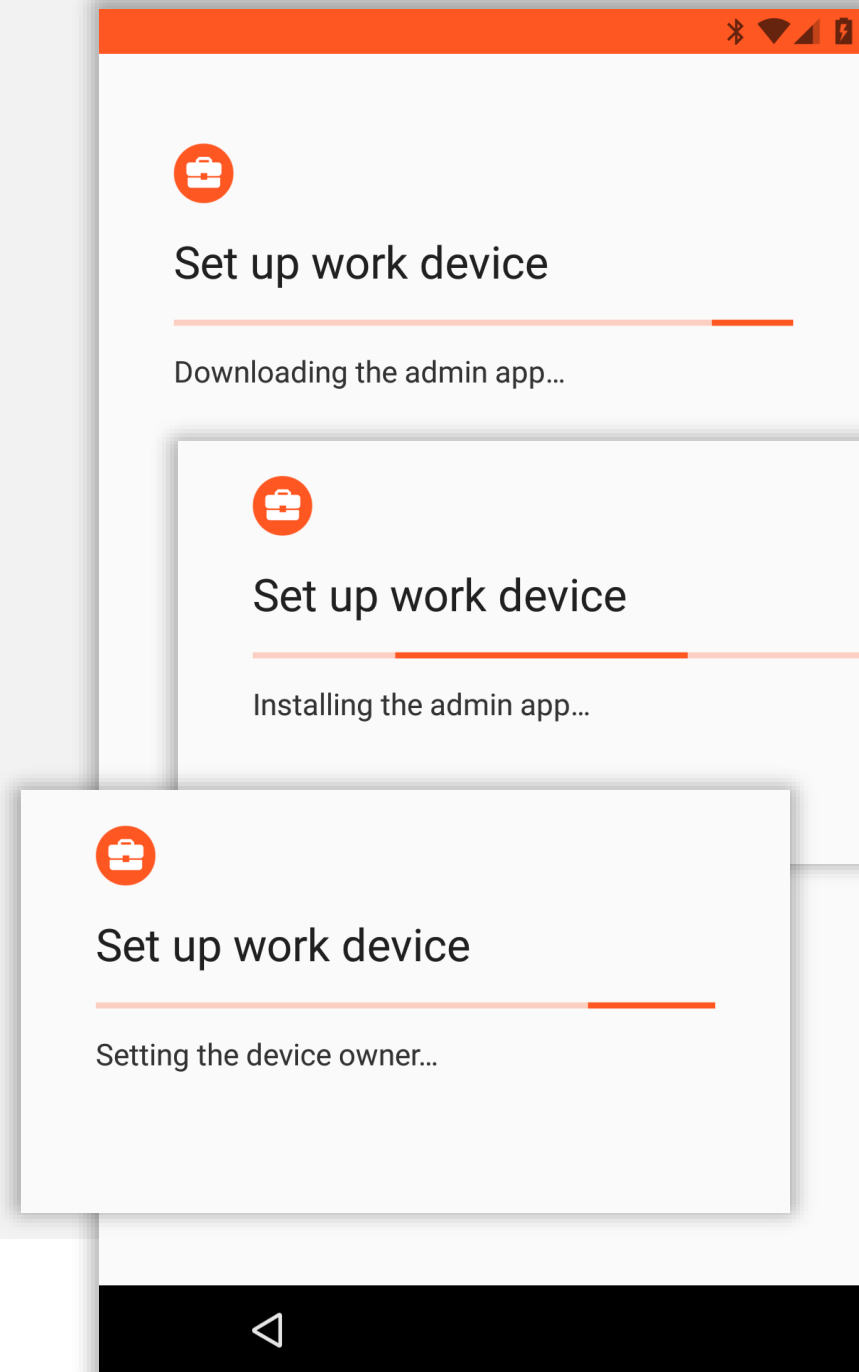


# The device will provision

The device will attempt to download the DPC provided in the NFC payload, install it and set AirWatch as the device owner.

This may take a few minutes.

The following prompts may include license acceptance, agreement to services or finishing the setup Wizard. This varies between OEMs, however when complete the device will display a sparse home screen before the DPC launches.



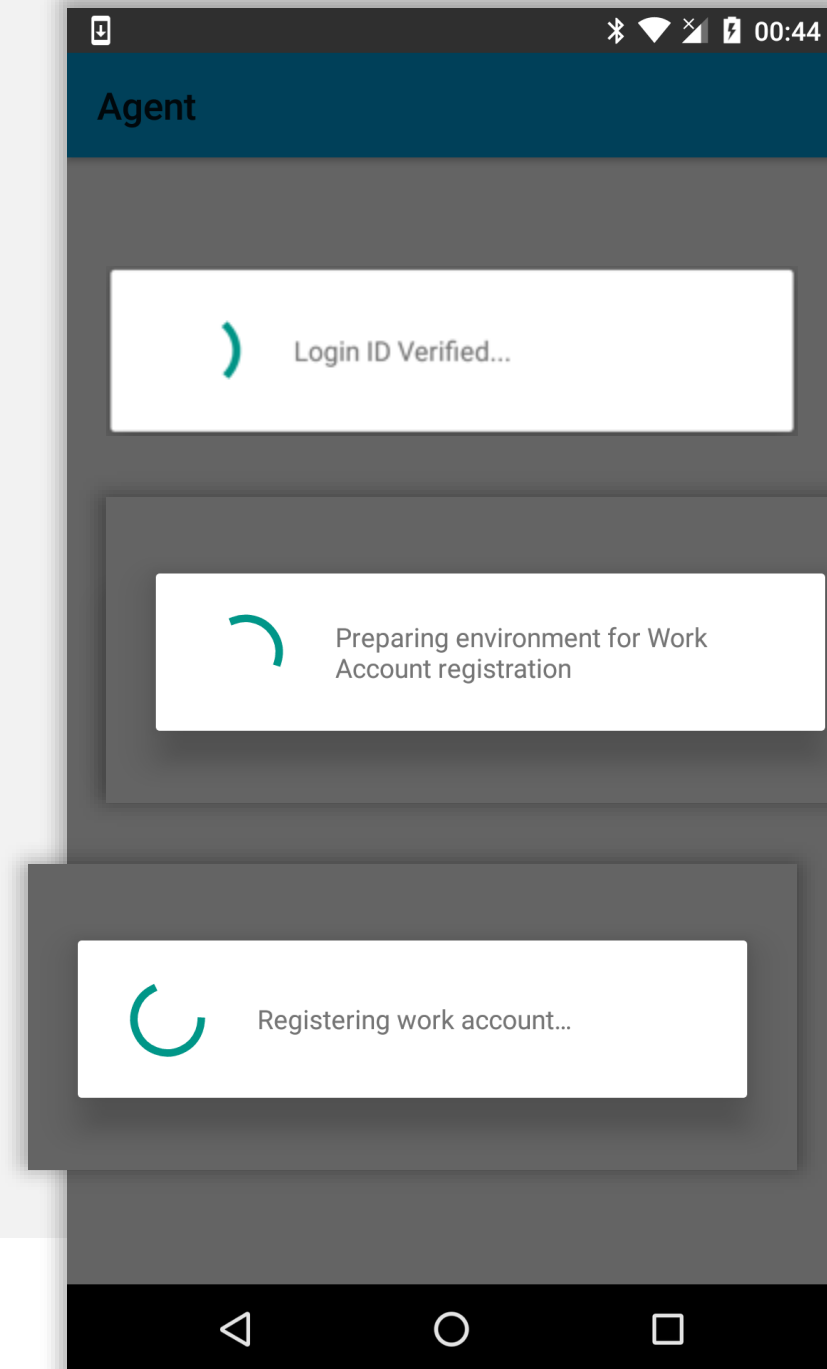


Shortly after Android enterprise provisioning is complete, the DPC will automatically launch and begin enrolment (there is no need to manually open the DPC from the home screen).

This is based on the AirWatch relay supporting auto-enrolment with credentials embedded within the NFC payload. If this data is not supplied, AirWatch will prompt for enrolment credentials.

### For Admins:

If using credentials, it would be more secure to do so in conjunction with AirWatch device staging, allowing a user to login from the agent rather than populating the NFC payload with user credentials.



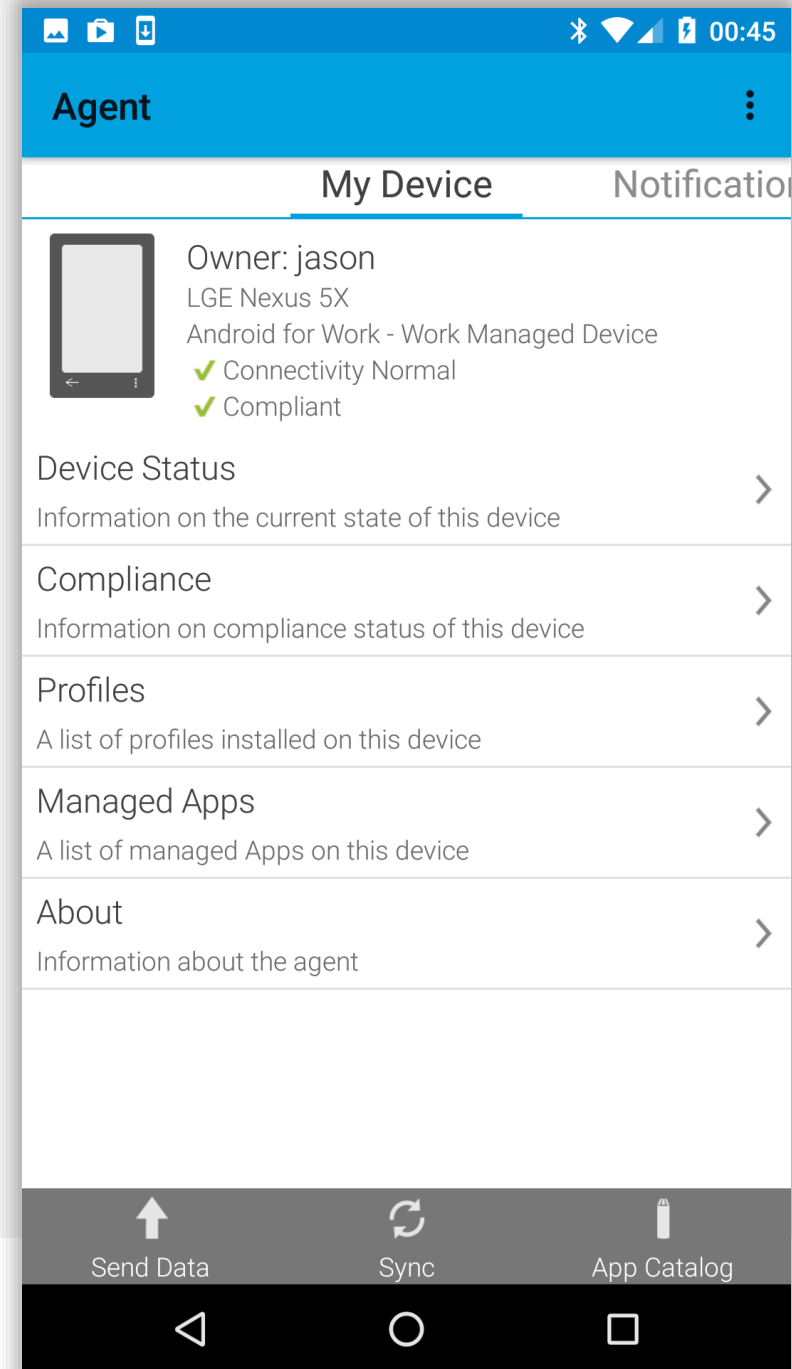


# Enrolment complete

The device has now completed enrolment and will continue to pull down applications and resources in the background if configured.

You may tap the home (O) button to leave the DPC.

If a passcode policy has been configured, you will be prompted to set one up shortly.



# bayton



Jason Bayton



bayton.org



/in/jasonbayton



@jasonbayton



+JasonBaytonX



jason@bayton.org

Updates to this document can be found here:

[Android enterprise provisioning guides](#)

